

# HOUSING GUIDE



UNIVERSITY OF  
**RIO GRANDE**  
AND RIO GRANDE COMMUNITY COLLEGE



## On-campus Housing

Welcome to your home away from home at Rio! Our on-campus housing isn't just a place to stay – it's a vibrant community that enhances your university experience. At Rio, we prioritize your safety and well-being, providing a secure environment that fosters both community engagement and individual independence. Research indicates that living on campus positively correlates with academic success, making this a valuable opportunity for personal growth and the formation of lifelong friendships.

Within our residence halls, Resident Assistants (RAs) are available around the clock to support you in achieving your goals. Much like our dedicated Student Success Coaches, RAs are here to assist and guide you throughout your time at Rio. In the event of conflicts, rest assured that our RAs are trained in conflict resolution to ensure a harmonious living environment.

Our Room and Board options allow our students to pick a plan that is best for their individual needs and wants. All plans include essential utilities such as electric, cable, and Internet. Additionally, you can enjoy the peace of mind knowing that there won't be any financial impact if your roommate decides to leave mid-year. Embrace the opportunity for personal and academic growth in a supportive and inclusive on-campus community at Rio!



## Residency Requirements

All students under the age of 23 living outside 50 miles from main campus are required to live on campus for their first four semesters. All requests for exceptions and questions concerning residency requirements should be directed to the Director of Residence Life.

Residency requirements shall mirror those set by the University of Rio Grande/Rio Grande Community College regarding tuition structures. The following persons shall be classified as exempt from on-campus residency requirements:

1. A dependent student, at least one of whose parents or legal guardians has been a resident within 50 miles of Rio Grande for all other legal purposes for twelve consecutive months or more immediately preceding the enrollment of such student in the University.
2. A person who has been a resident within 50 miles of Rio Grande for the purpose of this rule for at least twelve consecutive months immediately preceding their enrollment and who is not receiving and has not directly or indirectly received in the preceding twelve months, financial support from persons or entities who are not residents within 50 miles of Rio Grande.
3. A person who is married.
4. A person with custody of a child.
5. A person who is not enrolled in any in-person courses.
6. A person who transfers in at least 64 credit hours from a previous institution.

Scan for full housing details.



---

# Boyd Hall

## Overview of building:

Boyd Hall is a first-year only male residence hall.

Room Types – Standard Double, Super Single

147 students in building

## Amenities list:

- Free Laundry
- Microwave (in upgraded rooms)
- Mid-Size Fridge in Suite (in upgraded rooms)
- Communal Restrooms
- WiFi & Ethernet
- Community TV Lounge
- XL Twin Bed
- RA's in building



---

# Davis Hall

## Overview of building:

Davis Hall is a first-year only female residence hall.

Room types – Standard Double, Super Single, Single

109 students in building

## Amenities list:

- Free Laundry
- Microwave (in upgraded rooms)
- Mid-Size Fridge in Suite (in upgraded rooms)
- Communal Restrooms
- WiFi & Ethernet
- Community TV Lounge
- XL Twin Bed
- RA's in building

## Special features list:

- Individualized Climate Controlled Rooms



Scan for a  
Virtual Tour of  
Boyd Hall



Scan for a  
Virtual Tour of  
Davis Hall



---

# Holzer Hall

## Overview of building:

Holzer Hall is an upper-class co-ed residence hall.

Room types – Quad, Super Double, Traditional Double, Super Single

137 students in building

## Amenities list:

- Free Laundry
- Microwave (in upgraded rooms)
- Mid-Size Fridge in Suite (in upgraded rooms)
- Communal Restrooms
- WiFi & Ethernet
- Community TV Lounge
- XL Twin Bed
- RA's in building



Scan for a  
Virtual Tour of  
Holzer Hall



---

# Wellness Hall

## Overview of building:

Wellness Hall is a co-ed, upper-class residence hall.

Room types – Triple Suite, Double Suite, Single, Standard Double, Super Single

122 students in building

## Amenities list:

- Free Laundry
- Microwave (in upgraded rooms)
- Mid-Size Fridge in Suite (in upgraded rooms)
- Communal Restrooms
- WiFi & Ethernet
- Community TV Lounge
- XL Twin Bed
- RA's in building

## Special features list:

- ADA
- Gender inclusive housing option
- Pet friendly



Scan for a  
Virtual Tour of  
Wellness Hall



# Trinity Hall

## Overview of building:

Trinity Hall is an upper-class, co-ed, all apartment style hall.

Room types – Hybrid, 3x1, 4x1, 2x2

186 students in building

## Amenities list:

- Private bedroom upgrades
- Free Laundry
- Microwave
- Mid-Size Fridge in Suite
- WiFi & Ethernet
- Community TV Lounge
- XL Twin Bed

## Special features list:

- Meeting Room
- ADA
- Apartment style
- In unit restroom
- In unit kitchen



Scan for a Virtual Tour of Trinity Hall

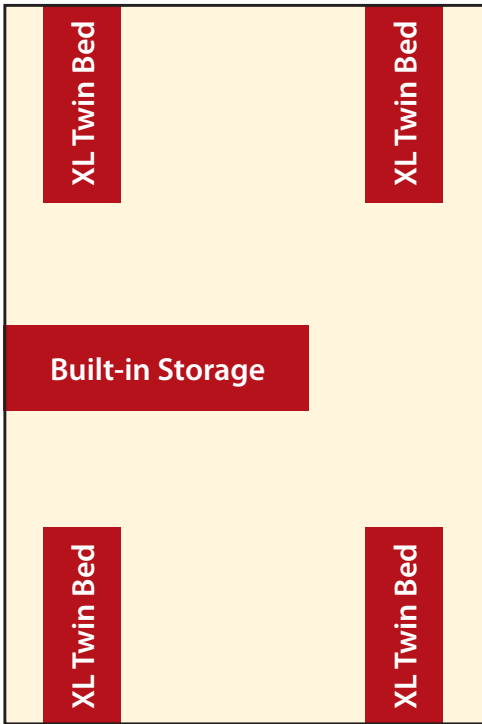


## Room & Board Choices (Annualized)

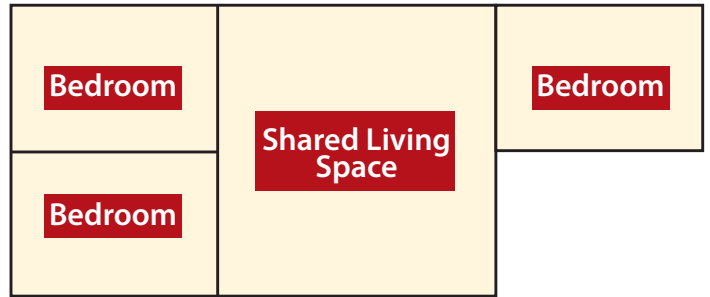
		Room Choice		Board Choice	
Hall	Room Type	Room Type Cost		Meal Plan	Meal Plan Cost
Traditional-Style Boyd, Davis, Holzer, Wellness	Traditional Double/Quad	\$6,300	+	19 (week)	\$4,500
	Super Double/Suite	\$7,300			
	Traditional Single	\$7,500			
	Super Single	\$7,700			
Apartment-Style Trinity	Double	\$8,200	+	19 (week)	\$4,500
	Single	\$9,200		14 (week)	\$4,200
				10 (week)	\$3,900

# Room Layouts

Please note: All room sizes are approximate and vary in exact size from residence hall to residence hall.



**Quad**  
*Super Double Room • 12' x 24'*



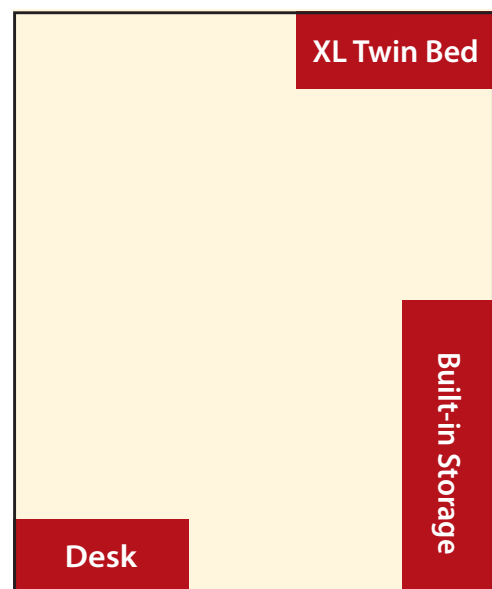
**Triple Suite**  
30' x 10'



**Double Suite**  
24' x 10'



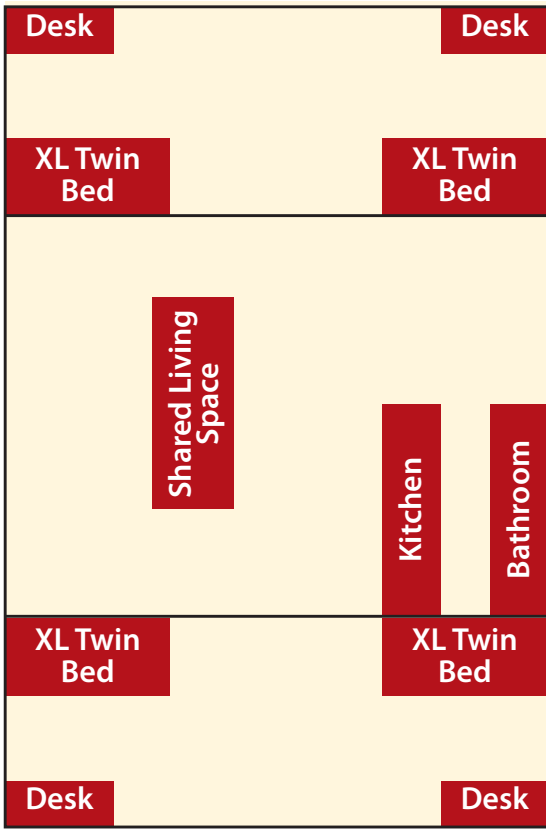
**Standard Double Room**  
*Super Single Room • 12' x 12'*



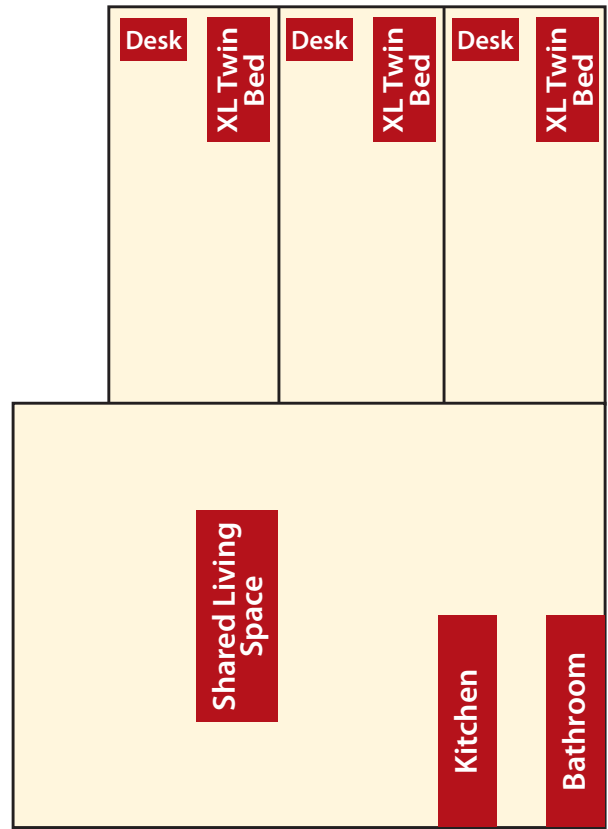
**Traditional Single Room**  
8' x 12'

Not to scale

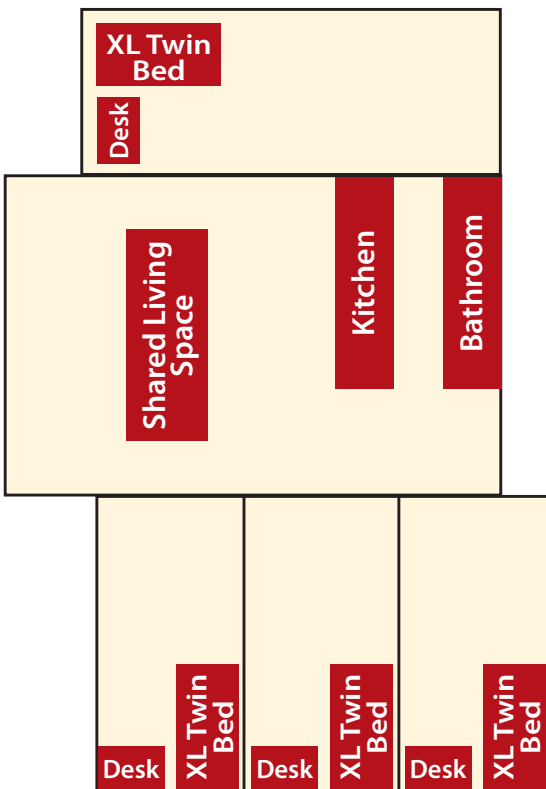
# Trinity Hall



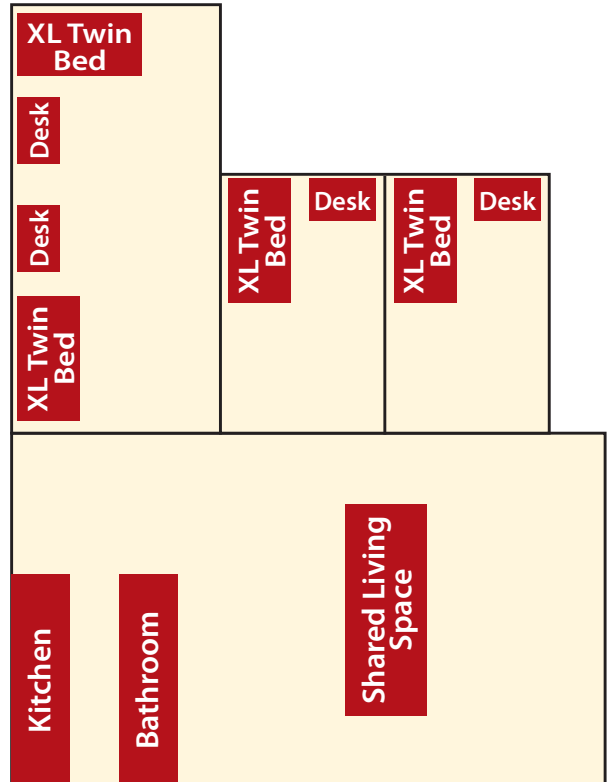
**2x2** • 38'x22'



**3x1** • 34'x27'



**4x1** • 43'x30'



**Hybrid** • 30'x30'

Not to scale

---

## Pet Rules and Regulations

- Pets are only permitted for students living in Wellness Hall.
- Allowable pets – Cats and dogs under 40 pounds. Fish aquariums 10 gallons and smaller are allowed in all locations.
- Each room may only have one pet, not one pet per person. First come first serve (meaning first to submit pet registration information)
- Age of animals – At least one year old and have lived with the student for at least 10 months.
- Animals must be on a leash at all times outside of the room except when in the pet park.
- Certification of all appropriate vaccinations must be presented when registering.
- Animals must be spayed or neutered and vet certification is required.
- Pet registration fee - \$200.00 for the academic year. This fee must be paid in full when the pet registration is submitted. This will not be applied to the student's bill. This is a non-refundable fee, any fees charged for damage in in addition to the registration fee.
- Pets may not exhibit any aggressive behavior.

All pets must be approved prior to residing on campus. Failure to register the animal prior to bringing the pet to campus will result in an immediate \$150.00 fine and loss of pet privilege for the remainder of the academic year. The acquisition of a dog or cat purchased, fostered, adopted, or strayed while a residential student at Rio is prohibited.

Please see the updated Pet Policy on our website for more information.

---

## Emotional Support Animals

Emotional Support Animals (ESAs) are permitted in campus residence halls at the University of Rio Grande and Rio Grande Community College but only after being authorized by the Office of Accessibility and approved by Residence Life/Dean of Students.

Rio uses its own process for determining eligibility for having an ESA in campus housing based on verification of student need and the suitability/ adaptability of a student's ESA with regard to campus life. Rio does not accept or recognize any type of Emotional Support Animal (ESA) external certificates or certifications in its determination of eligibility.

If you are interested in bringing an ESA to campus, you must complete the following process:

- Pick up an ESA packet from the Office of Accessibility to have your eligibility determined.
- Contact the Office of Accessibility at [accessibility@rio.edu](mailto:accessibility@rio.edu) to make an appointment to discuss eligibility criteria.
- If eligibility criteria are met, your request for an ESA Housing Accommodation is sent by the Office of Accessibility to the Dean of Students on your behalf.
- You will receive notification from the Dean of Students regarding the determination of your request.

Once approved by the Dean of Students, an ESA housing accommodation is good for 1 (one) academic year, beginning with the fall term and running through the summer term. All ESA accommodations must be renewed annually, for each academic year, and student need for an ESA must be reverified and/or updated.



# Moving In

## Items to bring

- Bedding: Sheets, comforter, pillows, pillowcases.
- Study Supplies: Notebooks, pens, pencils, highlighters.
- Kitchen Basics: Microwave-safe dishes, utensils, coffee maker.
- Personal Care: Towels, toiletries, shower caddy.
- Laundry: Hamper, detergent, dryer sheets.
- Tech Gear: Laptop, charger, headphones.
- Clothing: Hangers, season-appropriate clothes.
- Storage: Bins, drawers, under-bed storage.
- Room Decor: Posters, lights, rugs.
- First Aid: Band-aids, pain relievers, cold medicine.
- Cleaning: All-purpose cleaner, paper towels, trash bags.
- Desk Supplies: Desk lamp, organizers, adhesive.
- Cooking: Mini-fridge, microwave.
- Documents: ID cards, health insurance, emergency contacts.
- Recreation: Books, games, sports equipment.
- **Additional items to bring if living in Trinity Hall** - Pots & pans, toilet paper & brush, cleaning supplies.

## Items not to bring

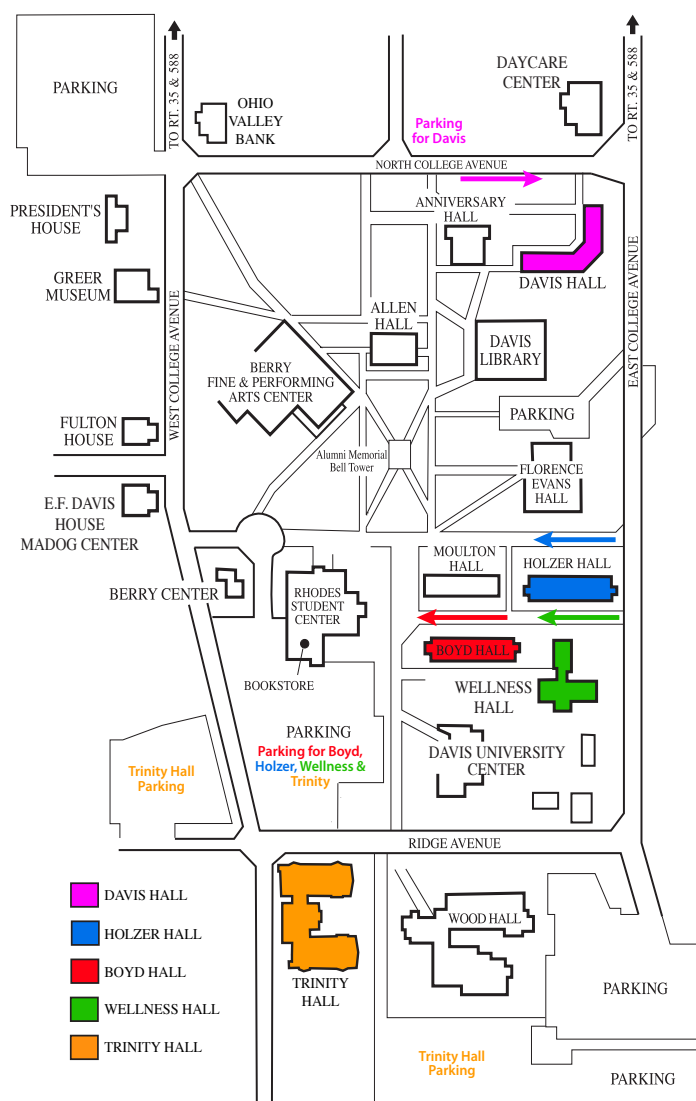
- Candles or Incense
- Space Heaters
- Pets (other than fish in up to a 10-gallon tank. "See pet section")
- Halogen Lamps
- Large Appliances or those with a hot plate or coil
- Extension Cords (unless with a surge protector)
- Air Conditioners
- Weapons
- Drugs and Paraphernalia
- Loud Speakers or Subwoofers

## Renters insurance

The University of Rio Grande suggests that residents acquire renters' insurance to safeguard their personal possessions. The university is not liable for any damage, theft, or loss that might occur within a resident's room.

## Arrival & Parking

Campus Police will direct you upon arrival to campus. The attached map highlights our residential buildings, main entrances (denoted with a star), and traffic flow on check-in days. Automobiles may be parked in "check-in" zones (denoted by the colored arrows) temporarily for unloading but then should be moved to any of our parking lots so that others may check-in.



---

# Life on Campus

For more information about campus life, events and organizations visit the campus engagement page on our website.

## Support and Services for Your Success

Remember that you're not alone on this journey – we have an array of on-campus services designed to ensure your success and well-being. Whether you're seeking academic assistance, counseling, or simply a place to relax, here are some of the services available to you:

- **Academic Advising:** Our dedicated Student Success Coaches are here to help you navigate your academic path, choose courses, and set goals to ensure you make the most of your time here. You can find our coaches in Rhodes Student Center.
- **Jenkins Academic Center:** If you're looking for a little extra support with your coursework, our tutoring center offers one-on-one help to boost your understanding and confidence. Tutoring is located in the Davis Library.
- **Counseling Services:** University life can sometimes be overwhelming. Our Office of Mental Wellbeing provides a safe space to talk about any challenges you might be facing and to develop strategies for coping and thriving. The office is located in Rhodes Student Center.
- **Student Clubs and Organizations:** Get involved and meet like-minded peers by joining one of our student clubs or organizations. This is a great way to explore your interests and build lifelong friendships. The Office of Student Engagement is located in Rhodes Student Center.
- **Health Services:** Your well-being is important to us. Our health center provides medical services and wellness resources to keep you feeling your best. The health clinic is located in Rhodes Student Center.

- **Library and Research Support:** For all your academic research needs, our library and team are here to assist you in finding credible sources and developing strong research skills.
- **Career Services:** Thinking ahead to post-graduation plans? Our Director of Career Services can help you explore career paths, develop job-search strategies, and prepare for interviews. Career Services is located in Rhodes Student Center.

## Resident Assistants

Resident Assistants (RA) are peer mentors who live within the residence halls and create a sense of belonging for all residents. Like Student Success Coaches, RAs are here to help you achieve your goals during your time at Rio. RAs handle day-to-day management of their floor, while Head RAs supervise an entire hall.

## Laundry

Laundry rooms are located in each residence hall and are available to use free of charge.

## Mail

All residential students are assigned a mailbox in our campus post office. Students receive their mailbox information alongside their housing assignment information. Located in Rhodes Student Center.

## The Marketplace

Rio Grande, through a partnership with Hallmark Management Services, offers full cafeteria service in The Marketplace, our all-you-can-eat buffet-style dining hall. The Marketplace is open to all students, staff, faculty, and community members. The Marketplace is located in Davis University Center.

## 39 North Coffee Shop

39 North Coffee Shop, located in Rhodes Student Center, offers coffees, teas, and light fare. Whether you need to catch up with friends, study in between classes, or stop in to take a break, we look forward to seeing you. Choose one of our specialty drinks, grab a light snack or enjoy one of our house-made salads & sandwiches.

---

# Campus Safety

Rio is a safe place to learn, live, work and grow. Your safety is our top priority. We want to ensure your time at Rio produces a positive, safe and healthy environment. Campus Police are available 24 hours a day, 365 days a year.

## Emergency numbers

In an emergency, Gallia County  
Emergency Services: 911

Campus Safety: 740-245-7286

Crisis Hotline in Partnership with  
Hopewell Health: 1-800-252-5554

## Sign up for Nixle alerts

Visit <https://local.nixle.com/accounts/login> to subscribe, set up Nixle, and receive your local area and university updates. Once you are finished with this process,

- Click "Settings"
- Click "Search for more Agencies, Community Groups & Neighbors"
- Type "University of Rio Grande Campus Police" into the search box
- Click "Go"
- Check the box where it says "Subscribe to the University of Rio Grande Campus Police"
- Click the "Subscribe to Selected Agencies"
- You can also add your zip code and subscribe to local alerts as well.

## Keys

Residents will receive an entrance key to their residence hall as well as a key to their room. Residents in Trinity Hall receive a key card for exterior access to the building.

## Security cameras

Public areas including lobbies, entrances and exits, parking lots, etc. have security cameras in operation.

## Fire drills and evacuations

Fire drills and evacuations are conducted regularly to ensure that students and staff are prepared, and all of our systems are properly operating.

## Accessibility

In the event that you have a disability that warrants reasonable housing accommodations or you have a medical condition that requires minor adjustments within the residential facilities, register with the Office of Accessibility and complete their registration process.

Once registered, and documentation is provided, the Office of Accessibility will determine the most appropriate accommodation based on the need of the student. Once a determination has been made by Student Accessibility Services, Housing and Residence Life will contact the student to review options in support of specific needs and to finalize housing details.

Have questions or need assistance? Call us at 740-245-7366, email [accessibility@rio.edu](mailto:accessibility@rio.edu), or visit the Office of Accessibility located in the Jeanette Albiez Davis Library.



UNIVERSITY OF  
**RIO GRANDE**  
AND RIO GRANDE COMMUNITY COLLEGE

**Rio Grande, Ohio**

**[www.rio.edu](http://www.rio.edu)**